

SICS SYSTEM

Delivering power, security and communications in off-grid locations.

PRODUCT BROCHURE

wj
sunstone



We Think Exceptional.

part of the **wj** group



www.wjsunstone.com



info@wjsunstone.com

SICS SYSTEM

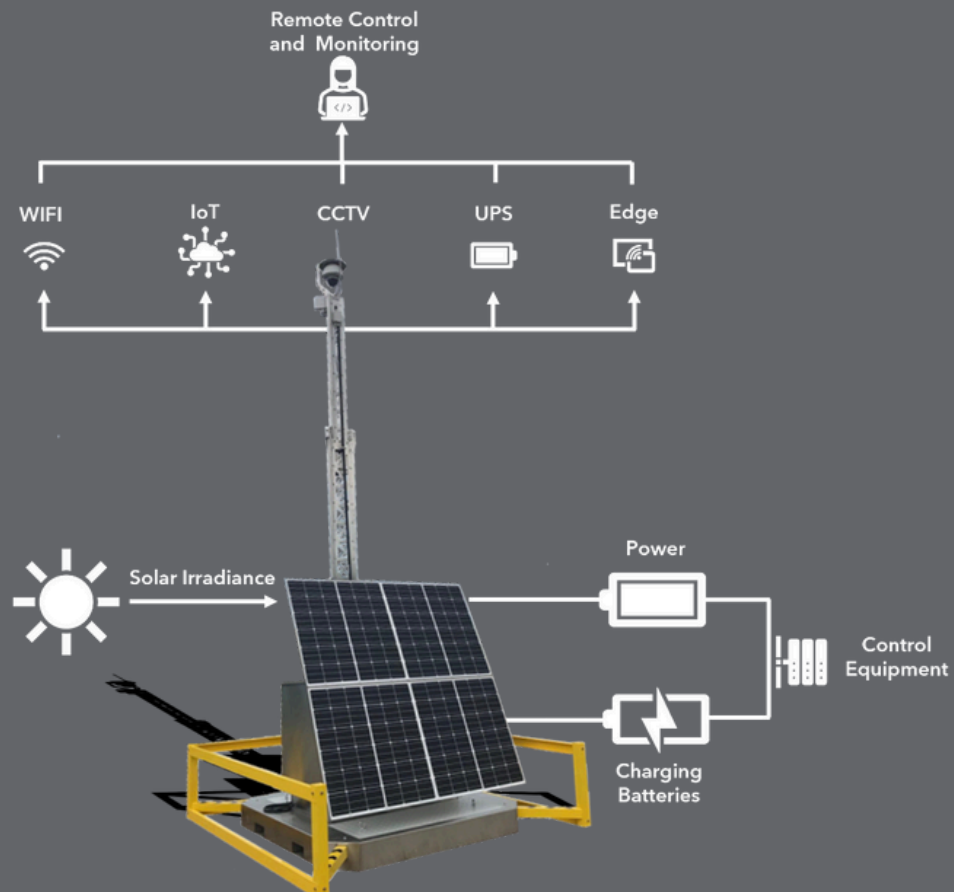
The Solar CCTV System (SICS) is an award-winning, innovative solution designed to provide surveillance and enable data transmission in off-grid locations. It is a ruggedised, semi-portable surveillance and communication system powered entirely by renewable energy that operates in highly corrosive environments and temperatures ranging from -40°C to $+60^{\circ}\text{C}$.

WHAT DOES IT DO?

The Solar CCTV System is designed to provide 24/7 surveillance in remote locations where traditional power sources may not be available or reliable. The system utilises solar panels and integrated battery systems to store energy from the sun and provide power to the CCTV cameras and telecommunications equipment, which can be deployed anywhere within range of a wireless, cellular or satellite network.

STANDARD FEATURES

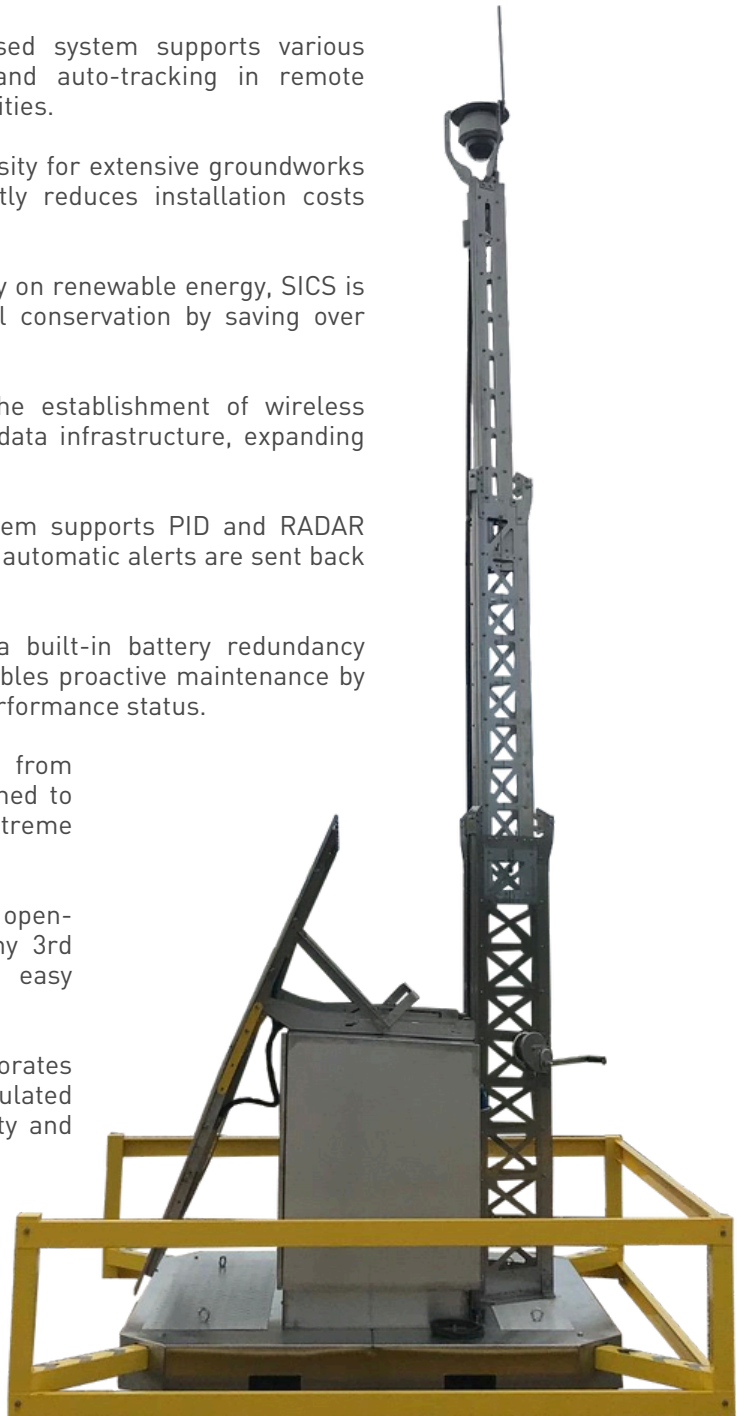
- Extreme System Enclosure: A rugged and extreme weather-resistant cabinet designed for longevity and performance in harsh conditions
- Internal Control and Power Management System (ICPMS): An efficient control system that manages power distribution, integrated IoT devices and sensors
- Advanced Battery System: Designed to store and deliver power as required, guaranteeing uninterrupted functionality
- Integrated IoT Mast: A robust telescoping mast for mounting sensors, IoT devices and antennas for communication and data collection
- Robust Transport Skid: The SICS skid is manufactured from 316L Stainless Steel and has integrated forklift slots for fast and easy deployment



BENEFITS

The Solar CCTV System (SICS) is an innovative and advanced security solution designed to push the limitations of conventional surveillance in off-grid locations. SICS not only provides robust security and communication systems in remote areas but also eliminates the reliance on hard-wired power or data infrastructure. This cutting-edge system boasts a ruggedised design supporting various cameras for HD CCTV, thermal imaging, and auto-tracking, making it a versatile choice for remote surveillance needs.

- **Off-Grid Security and Connectivity** > SICS ensures security and communication in remote locations without the need for traditional power or cabled infrastructure, making even the most secluded areas secure and connected.
- **Versatile Surveillance Capabilities** > This ruggedised system supports various cameras, enabling HD CCTV, thermal imaging, and auto-tracking in remote locations, delivering unparalleled surveillance capabilities.
- **Cost-Effective Installation** > By eliminating the necessity for extensive groundworks to install power and data cabling, SICS significantly reduces installation costs associated with traditional security systems.
- **Environmentally Friendly Operation** > Operating solely on renewable energy, SICS is self-sustaining and can contribute to environmental conservation by saving over 500kg of CO2 emissions per unit annually.
- **Extended Connectivity Options** > SICS facilitates the establishment of wireless cellular or WiFi networks in areas lacking existing data infrastructure, expanding connectivity possibilities.
- **Automated Detection and Alert Systems** > The system supports PID and RADAR systems for auto-detection, smart analytics, ensuring automatic alerts are sent back to control centres for swift response.
- **Proactive Maintenance Features** > Equipped with a built-in battery redundancy system and remote monitoring capabilities, SICS enables proactive maintenance by providing real-time insights into battery and power performance status.
- **Resilient Design for Harsh Environments** > Crafted from 316L stainless steel, SICS is a robust system designed to withstand highly corrosive environments and extreme temperatures ranging from -40°C to +50°C.
- **Interoperability with Third-Party Systems** > SICS is an open-source solution that seamlessly integrates with any 3rd party hardware and software, allowing for easy incorporation into existing security solutions.
- **Enhanced Stability and Mobility** > The system incorporates a stable base with stabilisation legs, a thermally insulated cabinet, and a 6m telescopic mast, ensuring stability and adaptability in various operational scenarios.
- **Rapid Deployment** > The SICS System can be fully deployed in less than four minutes, delivering instant security coverage.



APPLICATIONS

The SICS System is a versatile and robust solution with applications in challenging and remote environments. Its support for any camera allows for HD CCTV, thermal imaging, and auto-tracking, ensuring comprehensive surveillance capabilities. The system enables real-time video monitoring over various networks and facilitates the creation of wireless cellular or WiFi networks in areas without existing data infrastructure. Overall, the SICS System excels in security, communication, and surveillance applications in challenging terrains.



Security

- CCTV Surveillance
- Smart Analytics
- Perimeter Detection
- Remote Monitoring



Rail

- Trackside Monitoring
- Set down Yard Security
- Passenger Surveillance & Monitoring



Construction

- Site Security
- Health & Safety
- 24/7 Hotspot & WiFi



Oil & Gas

- Site Security
- Wellhead Telecoms
- Gas Detection



Telecoms

- Temporary Event WiFi Mobile Hotspot
- Point to Point Networks
- Optional Starlink Integration



Highways

- Traffic Monitoring
- Average Speed Detection (TASCAR)
- Air Quality Monitoring



DATASHEET

UNIT DIMENSIONS

- Transport: H 2400mm W 2000mm D 2000mm
- Deployed: H 6000mm W 2800mm D 2800mm
- Operating temperature: -40°C to +50°C
- Solar Array: 720W
- Battery system: 8kWh @80% DoD
- Weight: 1000kg

EXTREME ENVIRONMENT CABINET

- 316L Stainless-Steel Construction
- Dual doors with dust/water seals
- Concealed door hinges
- 5° sloped roof
- Integrated foldable solar array bracket
- IP Rating: IP66 rated



TRANSPORT BASE

- 316L Stainless-Steel Construction
- Integrated forklift slots and lifting eye points
- Extendable stabilising outriggers with locking pins
- 3x yellow dual safety barriers

CAMERA AND VMS OPTIONS

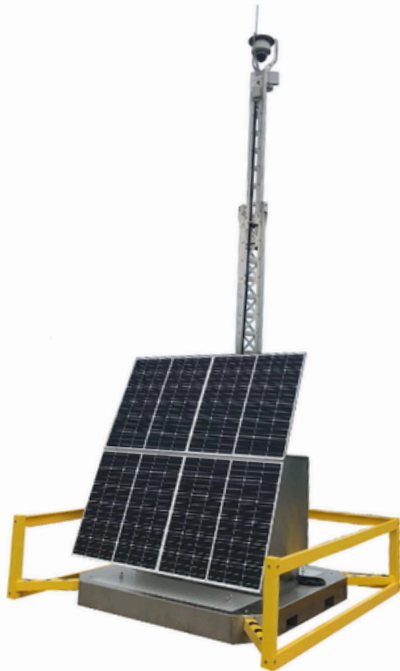
- Speak to us about the range of cameras which can be integrated into the system, including further integration into your preferred Video Management System.

CAMERA BRACKETRY

- Customised camera brackets for Static, Bullet, PTZ and Thermal Imaging Cameras.

TELESCOPIC MAST

- Deployed Height: 6m
- Retracted Height: 2.2m
- Polycarbonate Safety Screening
- Full 316L stainless-steel Construction
- Anti-wind loading design
- Multiple Point Mast Locking System



CERTIFICATIONS

- EAC Certification
- CE Marking

BRITISH STANDARDS

- Eurocode 3 - Design of steel structures, BS EN 1993-3-1:2006
- Eurocode 1 - Actions on structures, BS EN 1991-1-4:2005
- Eurocode 3 - Design of steel structures, BS EN 1993-3-2:2006





Unit 1, Altira Business Park, The Boulevard, Herne Bay,
Kent, CT6 6GZ
United Kingdom

+44 (0) 3301 066666



FS 651086



We Think Exceptional.

part of the **wj**group



www.wjsunstone.com



info@wjsunstone.com